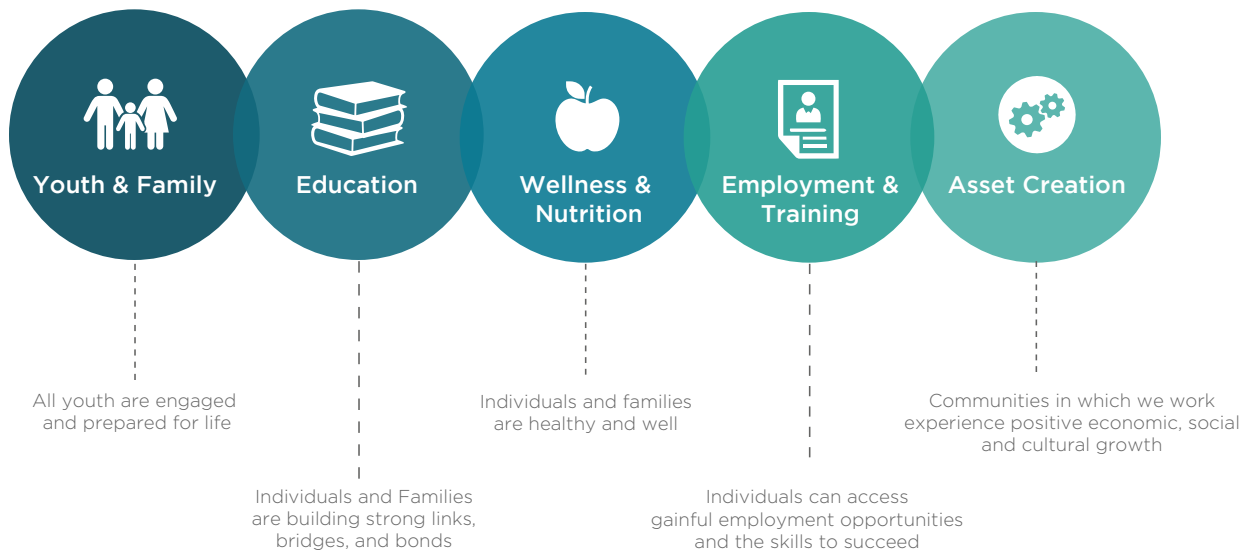


OUR VISION

*“We envision individuals and families
are well and living in thriving communities”*

Pillsbury United Communities works with underestimated populations across Minneapolis to foster resilience and self-sufficiency of individuals, families, and the communities as a whole. Our network of community centers and social enterprises address a spectrum of intersecting needs in these 5 impact areas:



Equity and Inclusion: We value diverse perspectives and believe in the power of difference to surface ideas that would not exist without it.

People and Partnerships: We value partnerships with organizations and individuals in the community and believe that we are stronger and have greater impact when we develop smart partnerships.

Co-Creating Solutions: We value being a relevant and sustainable partner by evolving in-step with those we serve.

Learning and Reflection: We value ongoing feedback from stakeholders and it guides our process of continuous learning and improvement.

Innovation and Creativity: We value going beyond conventional thinking, take risk, and pursue better, bolder, and more farsighted ways to meet our goals.

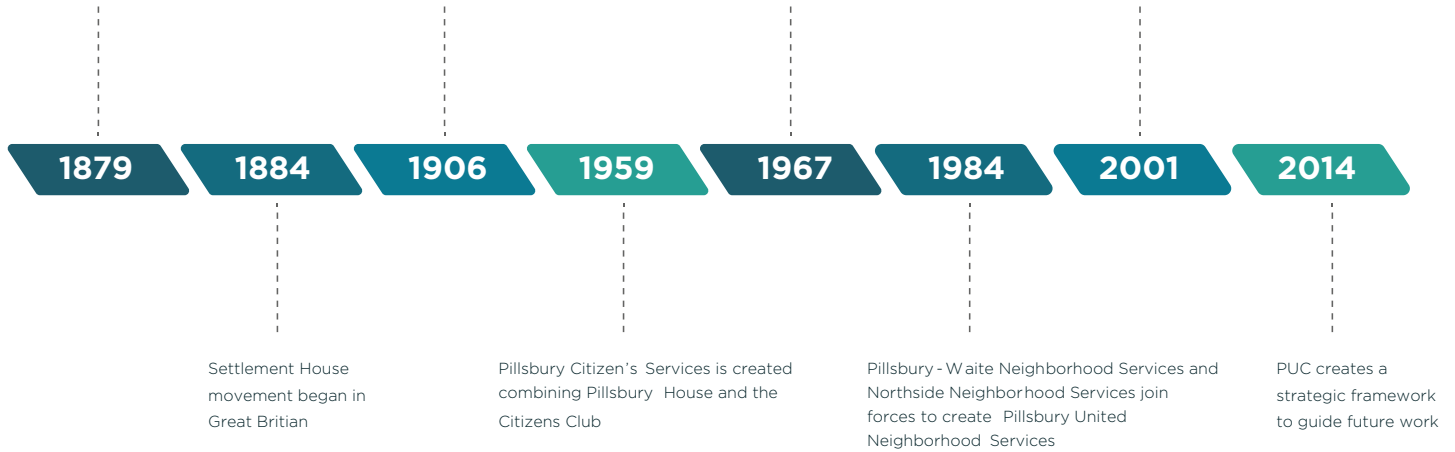
OUR VALUES

Plymouth Mission was founded by Plymouth Congregational Church which later became Bethel Settlement

John and Charles Pillsbury donated funds to Bethel for expansion of services. The agency changed its name to Pillsbury House

Pillsbury Citizen's Services and Waite House combine

Pillsbury United Communities is established, combining Pillsbury Neighborhood Services and the Confederation of Somali Communities in Minnesota



1 Training and Development Center

5 Neighborhood Centers

5 Impact Areas

11 Business Ventures

21 Authorized Charter Schools

180 Staff

1,000+ Local, National and International Partnerships

66,000 Connected Individuals

Through our community Centers, Programs, Events, and Our Theatre